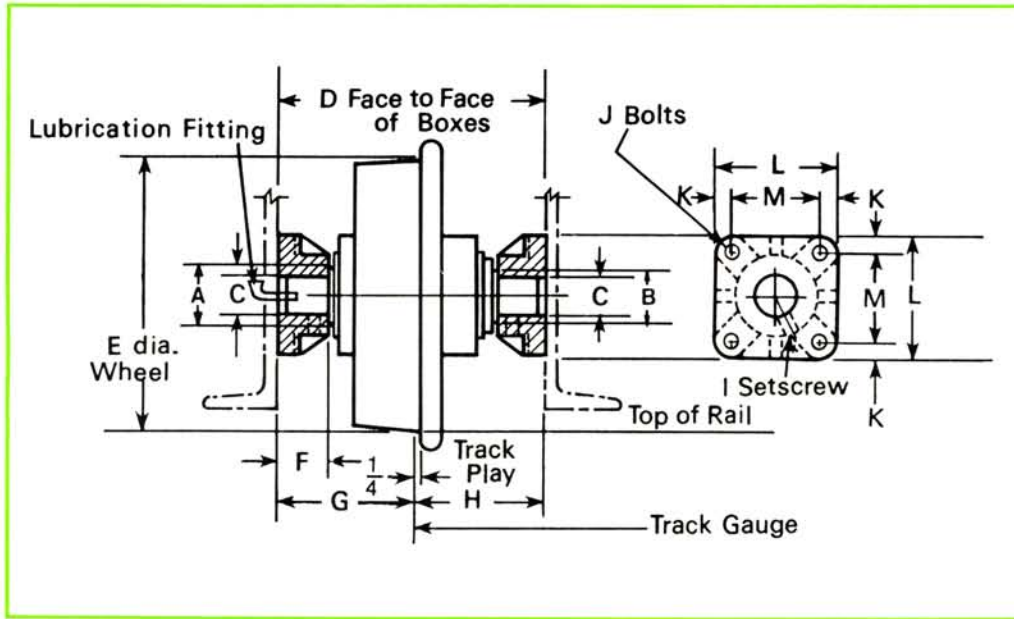




FLANGE MOUNTING



Flange Mounting Box FM-1 is available for use on the 1 through 8 ton wheel assemblies using tapered roller bearings.

Flange Mounting Box FM-2 is available for use on the 10 through 15 ton wheel assemblies using tapered roller bearings and the 700°-1200°F. Extra High Temperature Assembly.

- Flange mounted units also available.

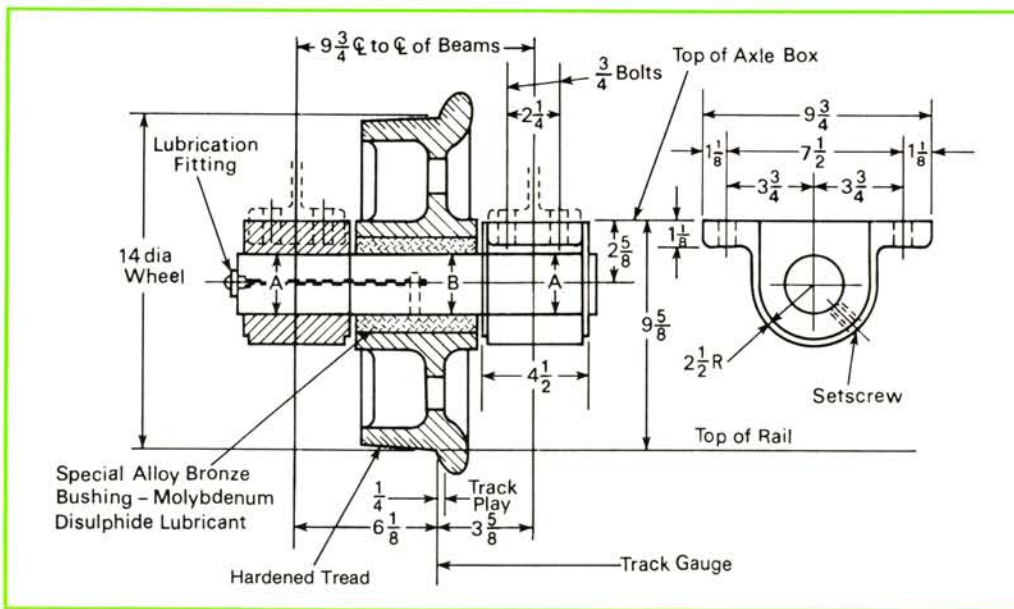
NOTE: For high temperature assemblies, contact IRWIN for "D" dimension.

TYPE	A	B	C	D	E	F	G	H	I	J	K	L	M
Heavy Duty FM-1	SEE			13½	14	2½	7	6½	5/8	5/8	7/8	6¾	4½
Ex. Heavy Duty FM-2	NOTE			15¾	14	3½	8½	7½	¾	¾	1½	7¾	5½

NOTE: For Dimensions A, B, and C see stub axle wheel assembly at the capacity required.



HI TEMP. WHEEL ASSEMBLY



The Irwin 3 through 7½ ton Stub Axle 550°F. Wheel Assembly includes:

- 1—Wheel, 10" - 24" diameter steel
 - 2—Axle boxes, high-grade cast iron
 - 1—Special alloy bronze, high-temperature bushing
 - 1—Axle C1045 hot rolled steel with lube fitting
- Load ratings are based on 50 RPM. RPM's greater than 50 are available.
 - Operating temperature 550°F. maximum.
 - Units are completely assembled, painted, lubricated and ready for installation.

HI-TEMP 550° F. SERIES Model No. HT-101

CAPACITY	SHAFT DIA. A	SHAFT DIA. B	APP. ASSEM. WEIGHT
3 ton	2½"	2½"	210 lbs.
5 ton	3"	3"	225 lbs.
7½ ton	3"	3½"	235 lbs.