

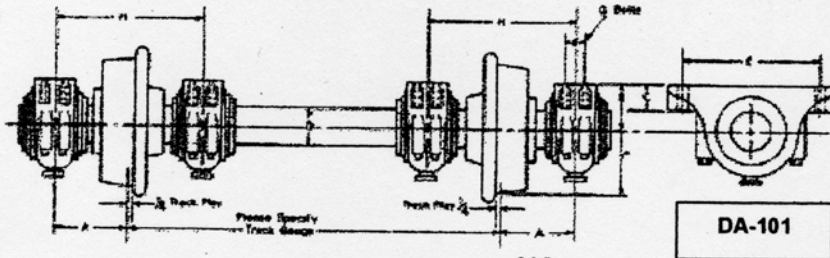
# IRWIN CAR AND EQUIPMENT

P.O. Box 409 - 9953 Broadway - Rt. 993  
 Irwin, PA 15642 USA  
 724 - 864 - 8900 (F) 724 - 864 - 8909  
 www.irwincar.com

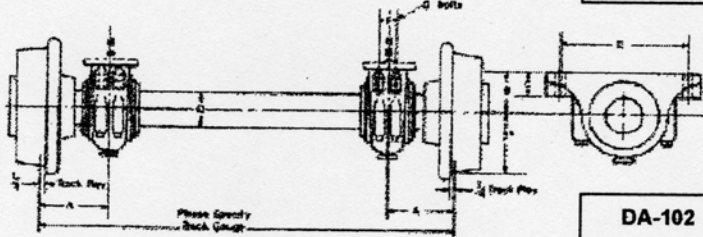
**IRWIN CAR AND EQUIPMENT  
 TECHNICAL SUPPORT SERVICES**  
 Maintenance & Lubrication Instructions for  
 Irwin model DA-101, 102 & 103 Series  
 Drive Thru - Axle Wheel Assemblies

**General Information** Your Irwin Drive Axle Wheel Assemblies are engineered to require minimum service while providing maximum service life in an easily maintainable design. The pillowblock bearing units on your Irwin DA-Series Drive Axle Wheel Assembly are factory lubricated with *Shell Alvania #2* grease (up to 5" shaft dia.). At shaft diameters above 5", they are lubricated with *Mobil Mobilux #2EP*. Both *Shell Alvania #2* and *Mobil Mobilux #2EP* greases are superior industrial greases using a lithium hydroxystearate thickener and highly refined base oil.

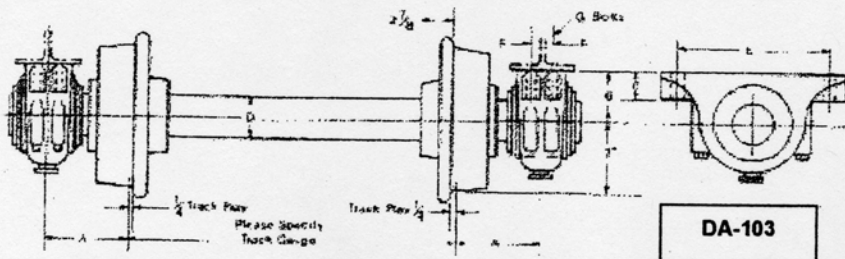
**Re-lubrication** Re-lubricate your bearings with a No. 2 consistency lithium based grease suitable for tapered roller bearing service. The only maintenance requirement for the tapered roller bearing pillowblocks on your Irwin DA-Series Drive Axle Wheel Assembly (s) is periodic re-lubrication at regular intervals as outlined in the appropriate instruction manuals. Since the wheels are securely press fit onto the axles, the only maintenance item on the assembly are the heavy-duty self-aligning tapered roller bearing pillowblock units.



DA-101



DA-102



DA-103

## Irwin model DA-101 Double Box Drive Thru-Axle Wheel Assembly

### Capacity Range (Per Assembly)

10 ton	30 ton
15 ton	40 ton
24 ton	50 ton

## Irwin model DA-102 Inside Box Drive Thru-Axle Wheel Assembly

### Capacity Range (Per Assembly)

4 ton	25 ton
6 ton	30 ton
10 ton	35 ton
15 ton	42 ton
20 ton	50 ton

## Irwin model DA-103 Outside Box Drive Thru-Axle Wheel Assembly

### Capacity Range (Per Assembly)

4 ton	25 ton
6 ton	30 ton
10 ton	35 ton
15 ton	42 ton
20 ton	50 ton

**Lubrication Instructions** For Storage or Special Shutdown - If your assemblies will be exposed to wet or dusty conditions or to corrosive vapors, extra protection is necessary. Add grease until it shows at the seals, rotate the bearing to distribute the grease; cover the bearing. After storage or idle period, add a little fresh grease before running.

**Operation in Presence of Dust, Water or Corrosive Vapors** - Under these conditions the bearings should contain as much grease as speed will permit, since a full bearing with consequent slight leakage is the best protection against entrance of foreign material. In the higher speed ranges too much grease will cause overheating - see "High Speed Operation". In the lower speed ranges, it is advisable to add extra grease to a new bearing before putting into operation. Bearings should be greased as often as necessary (daily if required) to maintain a slight leakage at the seals. This will depend entirely upon your application and operations, and becomes a function of responsible routine maintenance.

**Operating Temperature** - Abnormal bearing temperatures may indicate faulty lubrication. Normal temperature range may range from "cool to warm to the touch" up to a point of "too hot to touch for more than a few seconds", depending on bearing sizes, speed and surrounding conditions. Unusually high temperature accompanied by excessive leakage of grease indicates too much grease. High temperature with no grease showing at the seals, particularly if the bearing seems noisy, usually indicates too little grease. Normal temperature and a slight showing of grease at the seals indicates proper lubrication of the pillowblock units on your Irwin Drive Axle Wheel Assembly.

### Irwin Drive Axle Wheel Assembly Relubrication Schedule

Hours	Suggested Relubrication Period in Weeks							
	1 to 250	251 to	501 to	751 to	1001 to	1501 to	2001 to	2501 to
Run per Day	RPM	500 RPM	750 RPM	1000 RPM	1500 RPM	2000 RPM	2500 RPM	3000 RPM
8	12	12	10	7	5	4	3	2
16	12	7	5	4	2	2	2	1
24	10	5	3	2	1	1	1	1